



Główne materiały

Obudowa pompy, obudowa silnika, pokrywa silnika, wirnik: stal nierdzewna AISI 316
 Wał: stal nierdzewna AISI 316 L
 Śruby i wkręty: stal nierdzewna AISI 316 L
 uszczelnienie wargowe z nitylu do 2 kW
 Uszczelnienie mechaniczne strony silnika: grafit/ceramika do 2 kW
 Uszczelnienie mechaniczne strony pompy: węgiel krzemu/węgiel krzemu/FPM

Budowa

Pompy zatapialne zbudowane ze staliwa nierdzewnego AISI 316 I-GMV z wirnikiem o swobodnym przepływie (vortex) I-GMC z wirnikiem jednokanałowym I-GMN z wirnikiem wielokanałowym
 Podwójne uszczelnienie mechaniczne w komorze olejowej (uszczelnienie wargowe od strony silnika do 2,4 kW, dwubiegunowego)
 Średnica króćcy tłocznych: DN 50-65-80.

Zastosowania

- do pompowania płynów agresywnych w stosunku do stali węglowych, szczególnie w instalacjach przemysłowych, głównie
- chemicznych,
- wolny przelot: do 50 mm

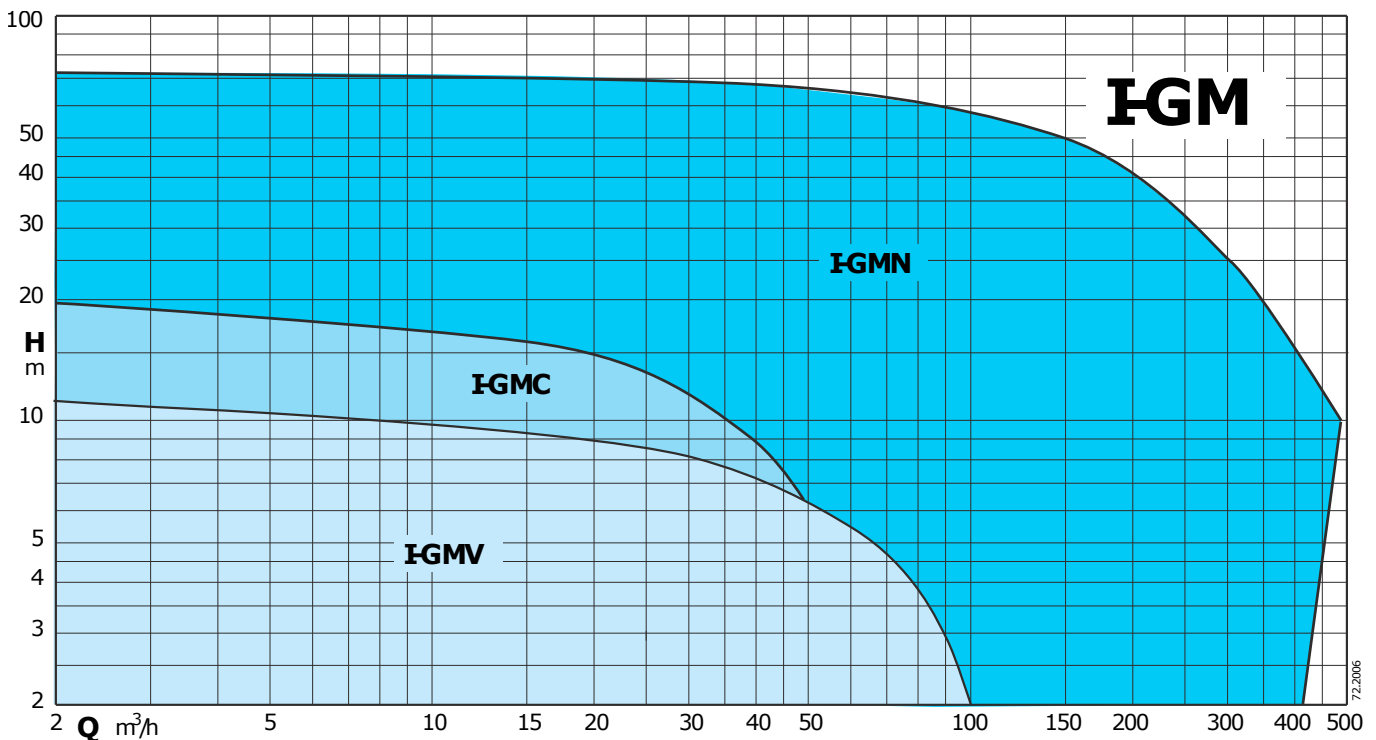
Warunki pracy pompy

Temperatura płynu do 40°C
 Maksymalna głębokość zanurzenia: 20 m (z odpowiednią długością kabla)
 Praca ciągła (z silnikiem całkowicie zanurzonym)


Silnik

Silnik indukcyjny dwubiegunowy, 50 Hz wersja trójfazowa: 400 V +/- 10%, do 3,1 kW, 400/690 V +/- 10%, ponad 3,1 kW
 Klasa izolacji H
 Stopień ochrony IP 68
 Liczba uruchomień: max 15/h, w regularnych odstępach czasu
 Kabel: H07RN8-F, długość 10 m
 Pozostałe modele: proszę kontaktować się z naszym biurem sprzedaży

Coverage chart



Technical data

TYPE	P ₂ kW	I _N A	Power Supply	r.p.m.	Starting	DN mm	Free passage Ø mm	Thermal protector	Humidity probe	 ATEX Eex
I-GMV 50-50B	1,0	2,5	3~ 400V	2850	D.O.L.	50	50	NO	NO	✓
I-GMV 50-50A	1,4	3,5	3~ 400V	2850	D.O.L.	50	50	NO	NO	✓
I-GMV4 50-65C	1	3	3~ 400V	1450	D.O.L.	65	50	NO	NO	✓
I-GMV4 50-65B	1	3	3~ 400V	1450	D.O.L.	65	50	NO	NO	✓
I-GMV4 50-65A	1,3	3,5	3~ 400V	1450	D.O.L.	65	50	NO	NO	✓
I-GMV4 50-80B	2,3	5	3~ 400V	1450	D.O.L.	80	50	NO	NO	✓
I-GMV4 50-80A	2,8	6,5	3~ 400V	1450	D.O.L.	80	50	NO	NO	✓
I-GMC 40-65B	2,4	5	3~ 400V	2850	D.O.L.	65	40	NO	NO	✓
I-GMC 40-65A	2,9	6	3~ 400V	2850	D.O.L.	65	40	NO	NO	✓
I-GMN 30-65B	3,2	6,5	3~ 400V	2850	D.O.L.	65	30	NO	NO	✓
I-GMN 30-65A	3,2	6,5	3~ 400V	2850	D.O.L.	65	30	NO	NO	✓
I-GMN 30-80B	5,7	12,5	3~ 400/690V	2850	Y/Δ	80	30	●	●	✓
I-GMN 30-80A	5,7	12,5	3~ 400/690V	2850	Y/Δ	80	30	●	●	✓
I-GMN 30-80S	8,2	15,5	3~ 400/690V	2850	Y/Δ	80	30	●	●	
I-GMN 40-100D	13,8	29,5	3~ 400/690V	2850	Y/Δ	100	40	●	●	✓
I-GMN 40-100C	13,8	29,5	3~ 400/690V	2850	Y/Δ	100	40	●	●	✓
I-GMN 40-100B	18,2	34	3~ 400/690V	2850	Y/Δ	100	40	●	●	✓
I-GMN 40-100S	21,4	38,5	3~ 400/690V	2850	Y/Δ	100	40	●	●	✓
I-GMN 50-100C	48,2	86,5	3~ 400/690V	2850	Y/Δ	100	50	●	●	
I-GMN 50-100B	48,2	86,5	3~ 400/690V	2850	Y/Δ	100	50	●	●	
I-GMN 50-100A	48,2	86,5	3~ 400/690V	2850	Y/Δ	100	50	●	●	
I-GMN4 60-100B	7,1	13,5	3~ 400/690V	1450	Y/Δ	100	60	●	●	✓
I-GMN4 60-100A	7,1	13,5	3~ 400/690V	1450	Y/Δ	100	60	●	●	✓
I-GMN4 80-100B	10,1	22	3~ 400/690V	1450	Y/Δ	100	80	●	●	✓
I-GMN4 80-100A	12,1	27	3~ 400/690V	1450	Y/Δ	100	80	●	●	✓
I-GMN4 100-150B	25	48	3~ 400/690V	1450	Y/Δ	150	100	●	●	
I-GMN4 100-150A	35,7	65,5	3~ 400/690V	1450	Y/Δ	150	100	●	●	

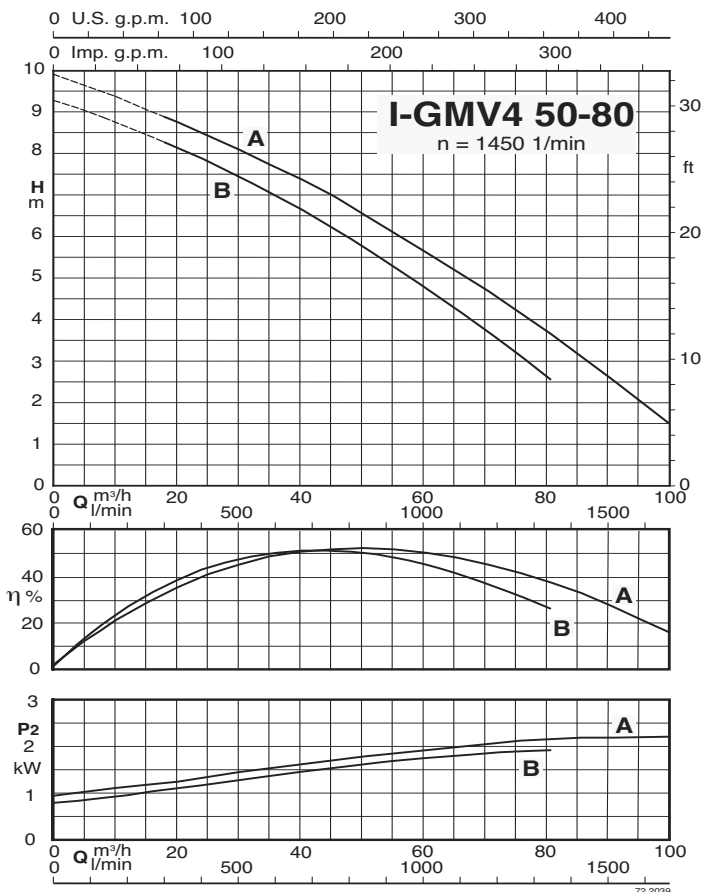
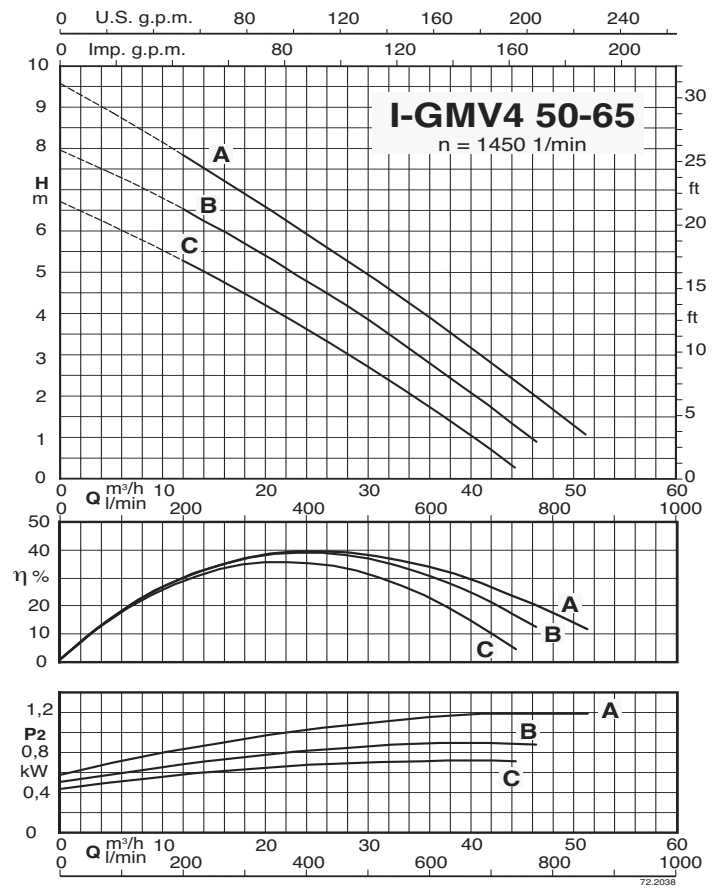
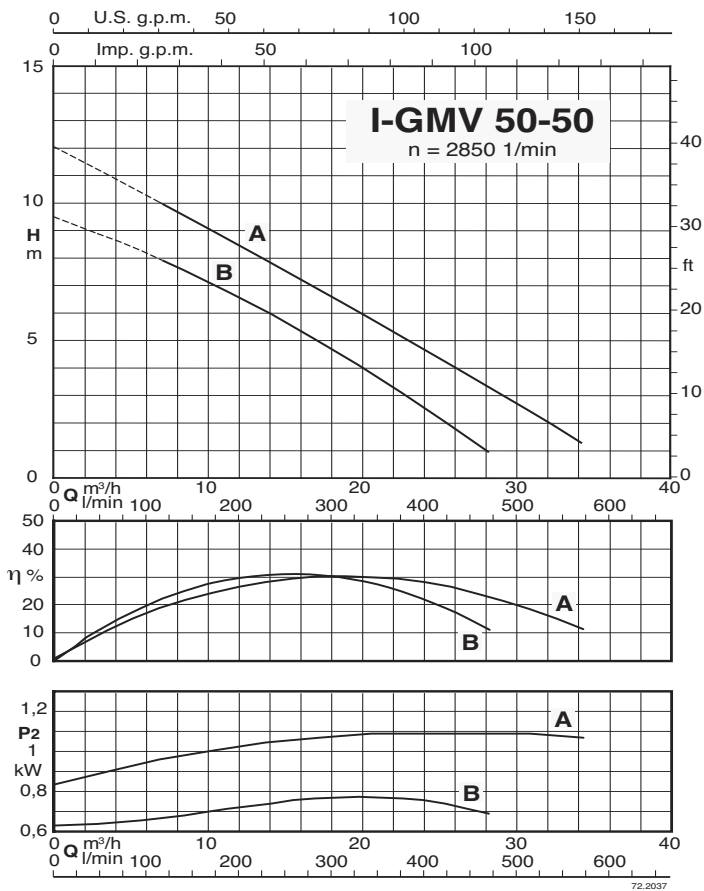
P₂ Rated power output

I_N Rated current

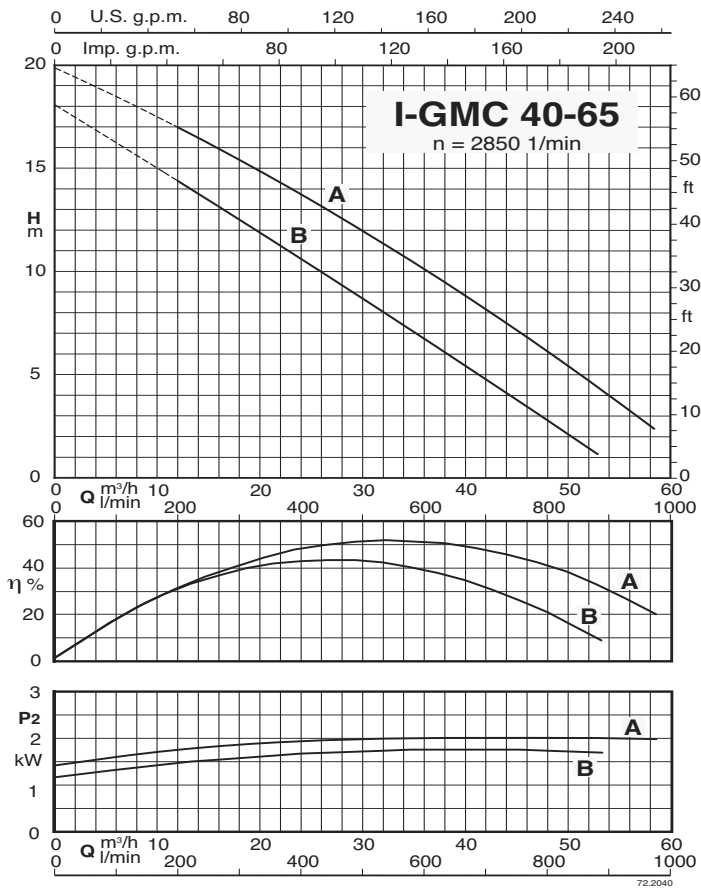
● Standard

✓ ATEX Eex Version on demand

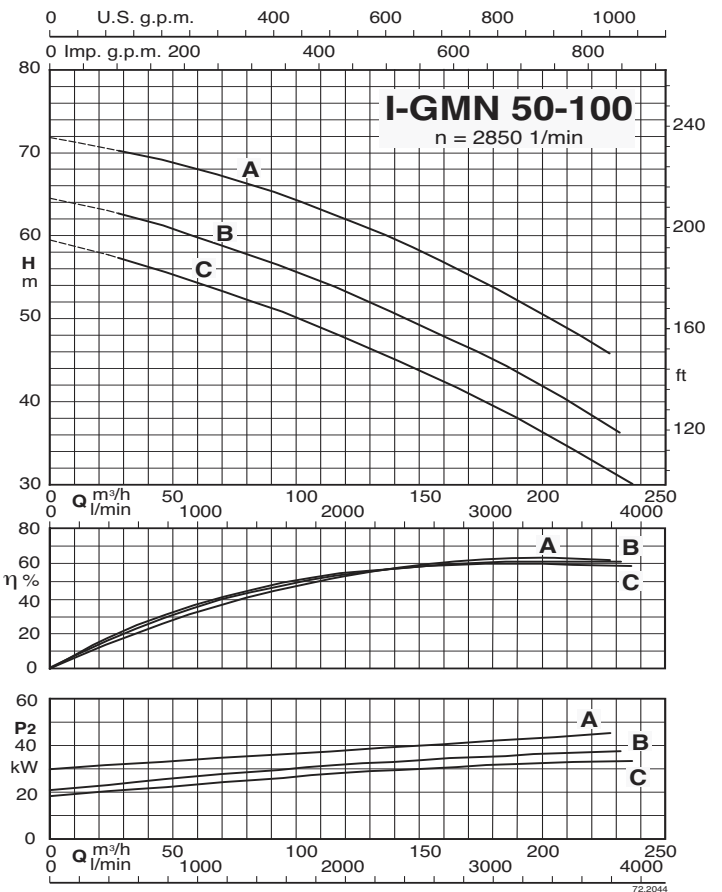
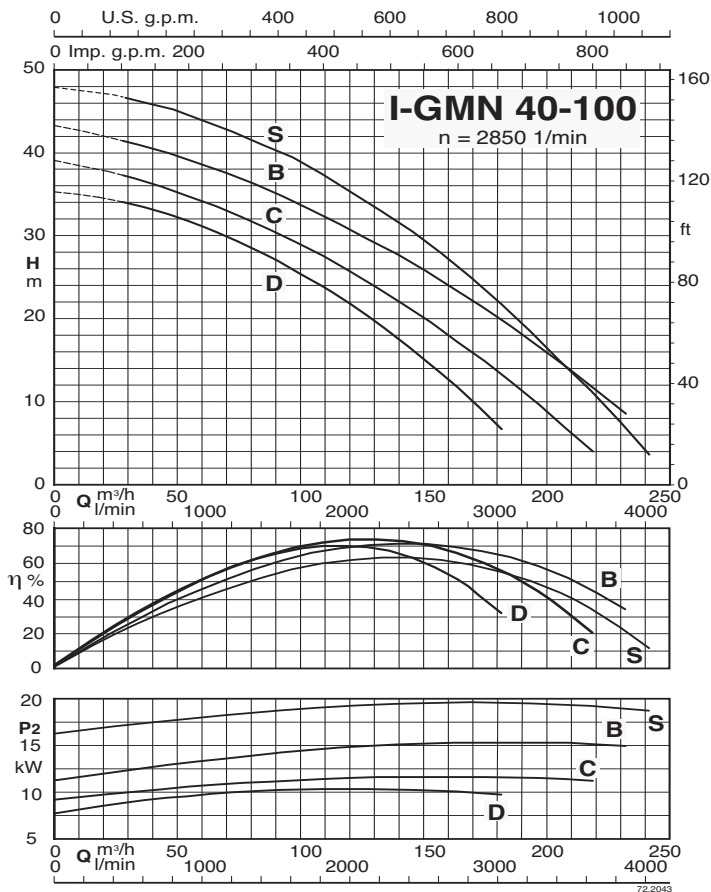
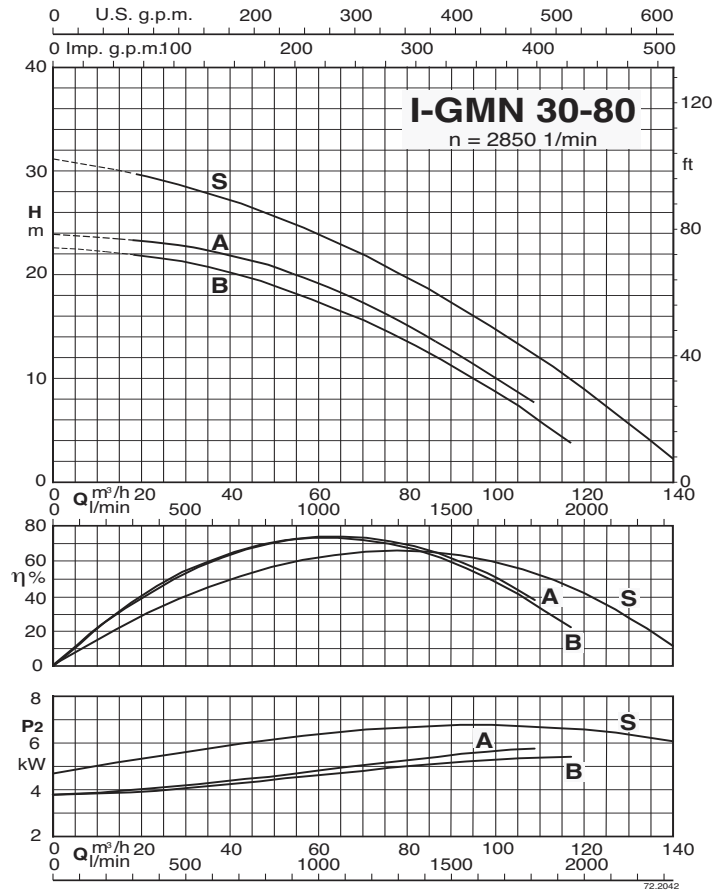
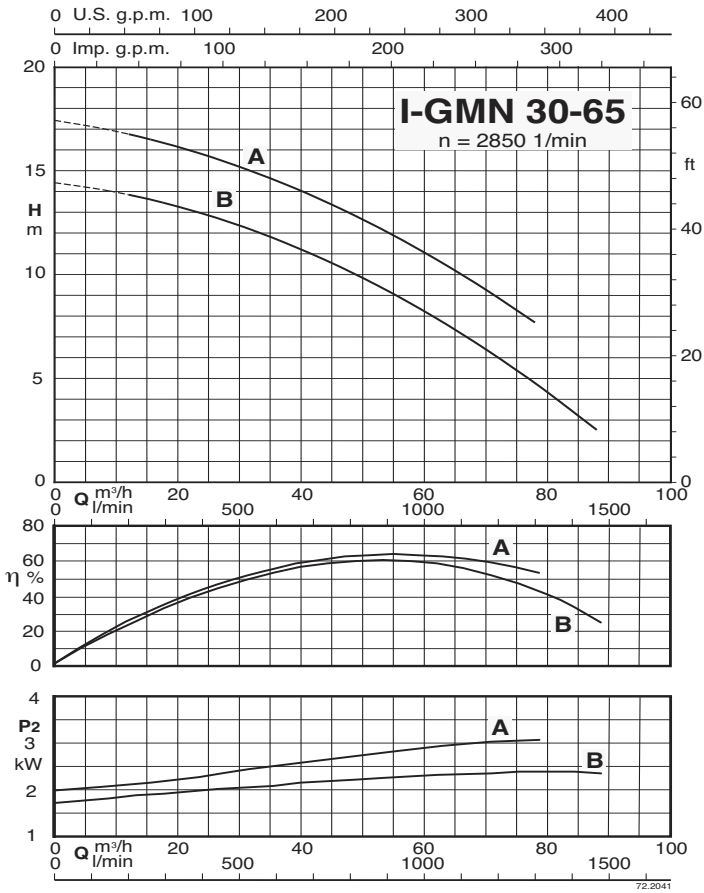
Characteristic curves



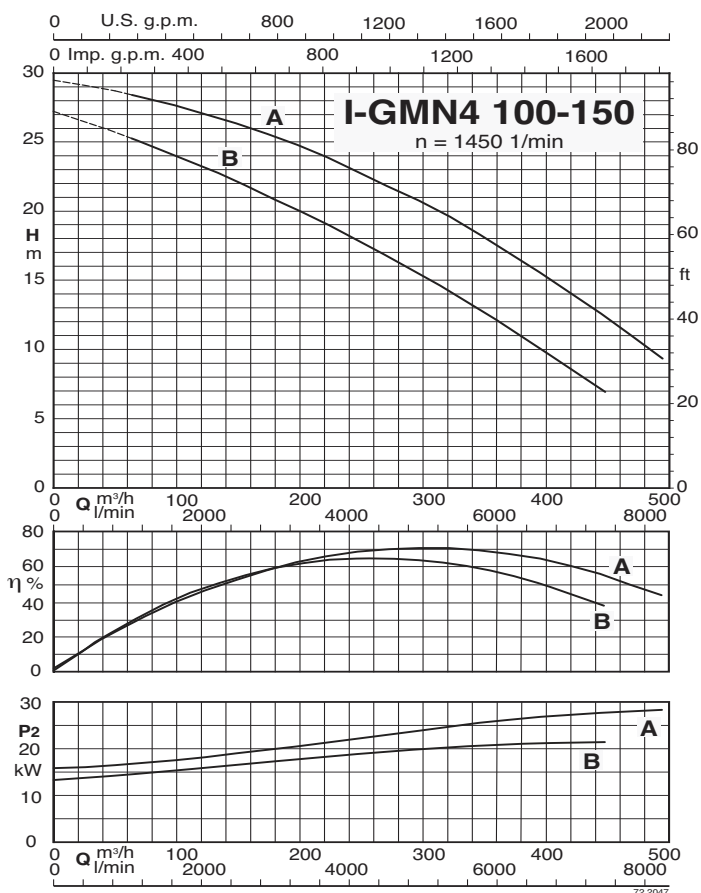
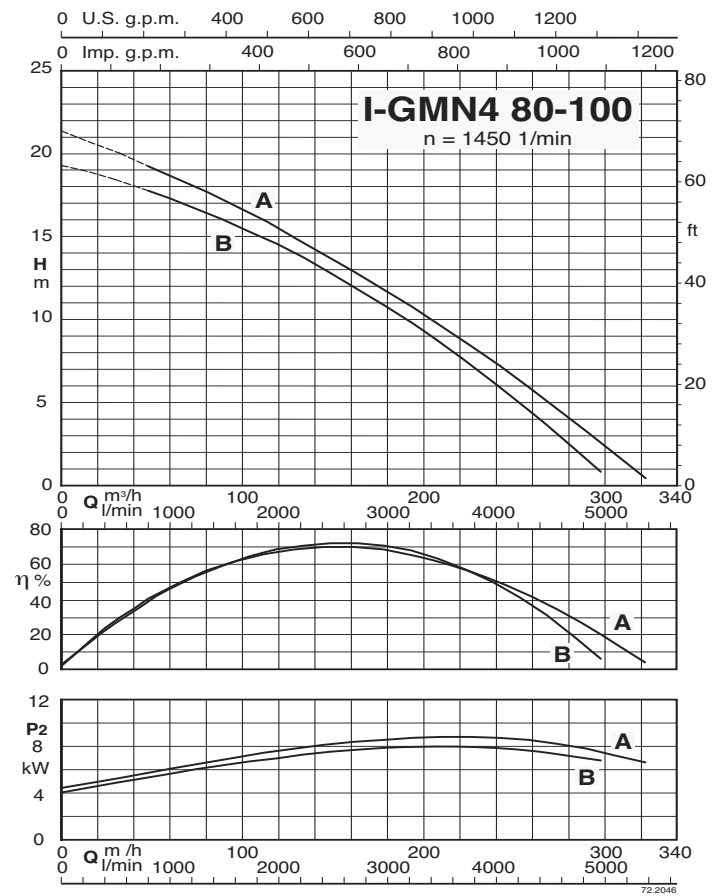
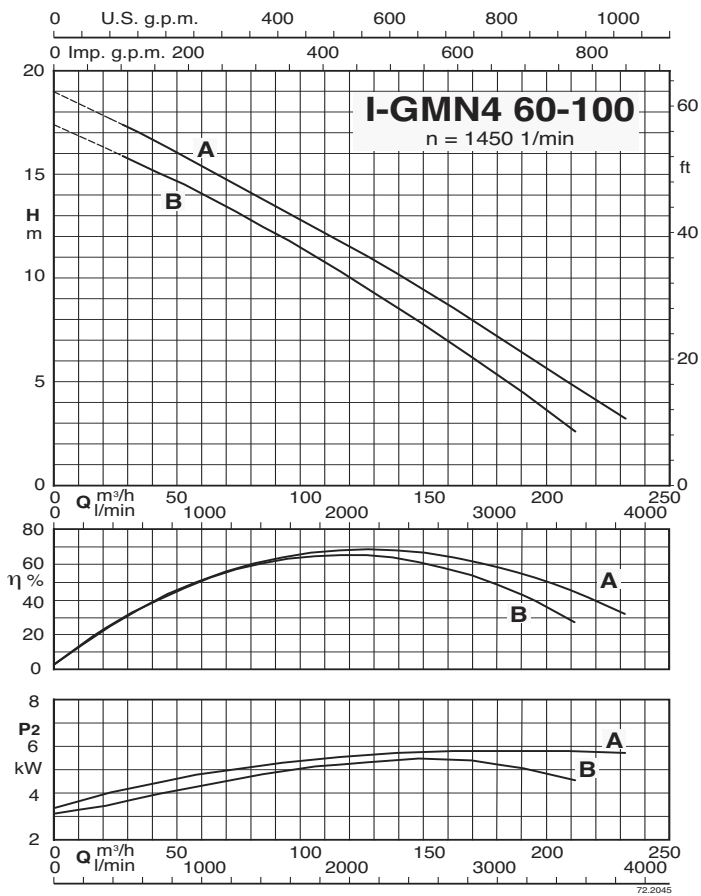
Characteristic curves



Characteristic curves

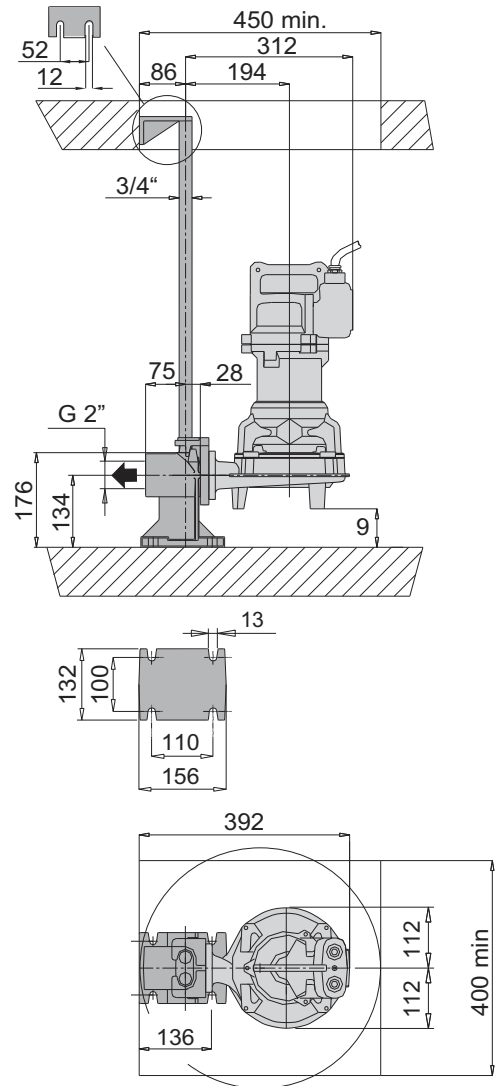
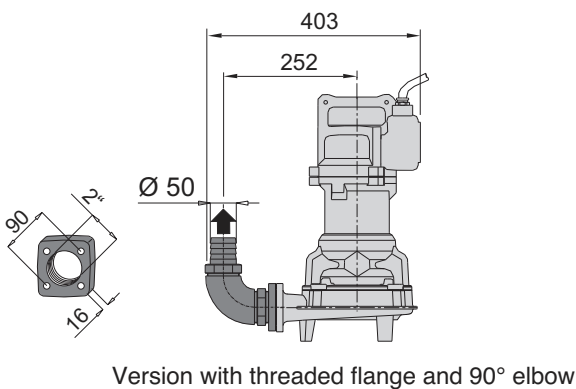
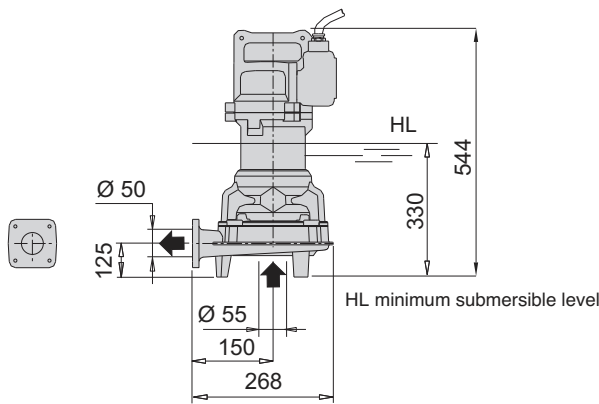


Characteristic curves



Dimensions and weights

I-GMV 50-50

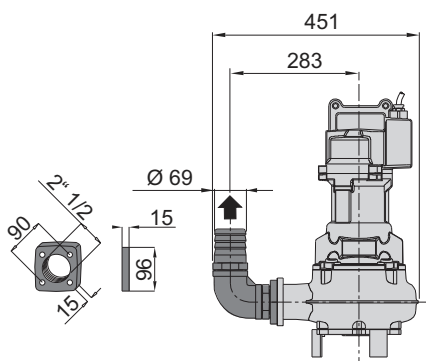
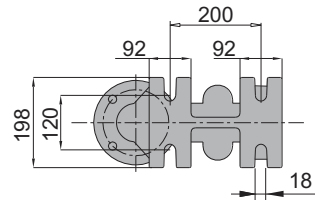
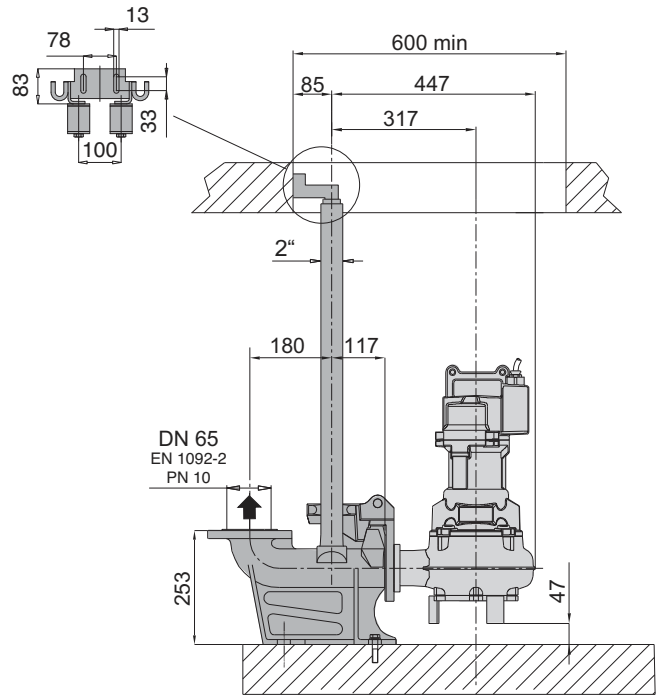
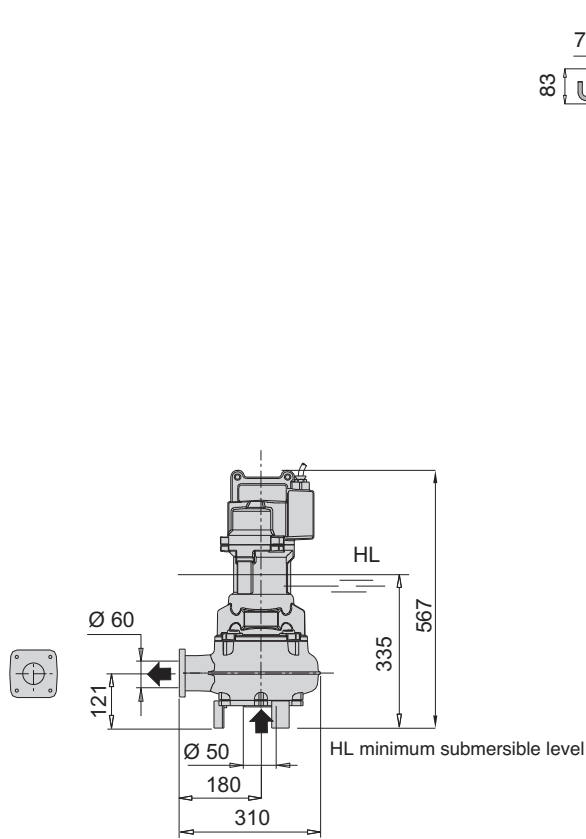


TYPE	Weight kg
I-GMV 50-50B	44
I-GMV 50-50A	

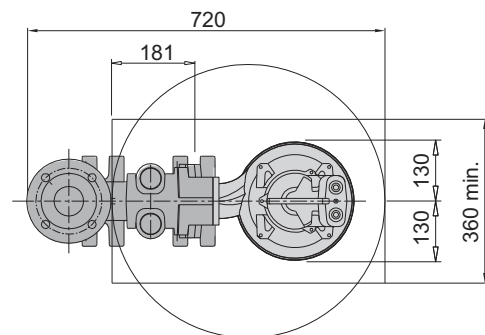
Dimensions and weights

I-GMV4 50-65

I-GMC 40-65



Version with threaded flange and 90° elbow

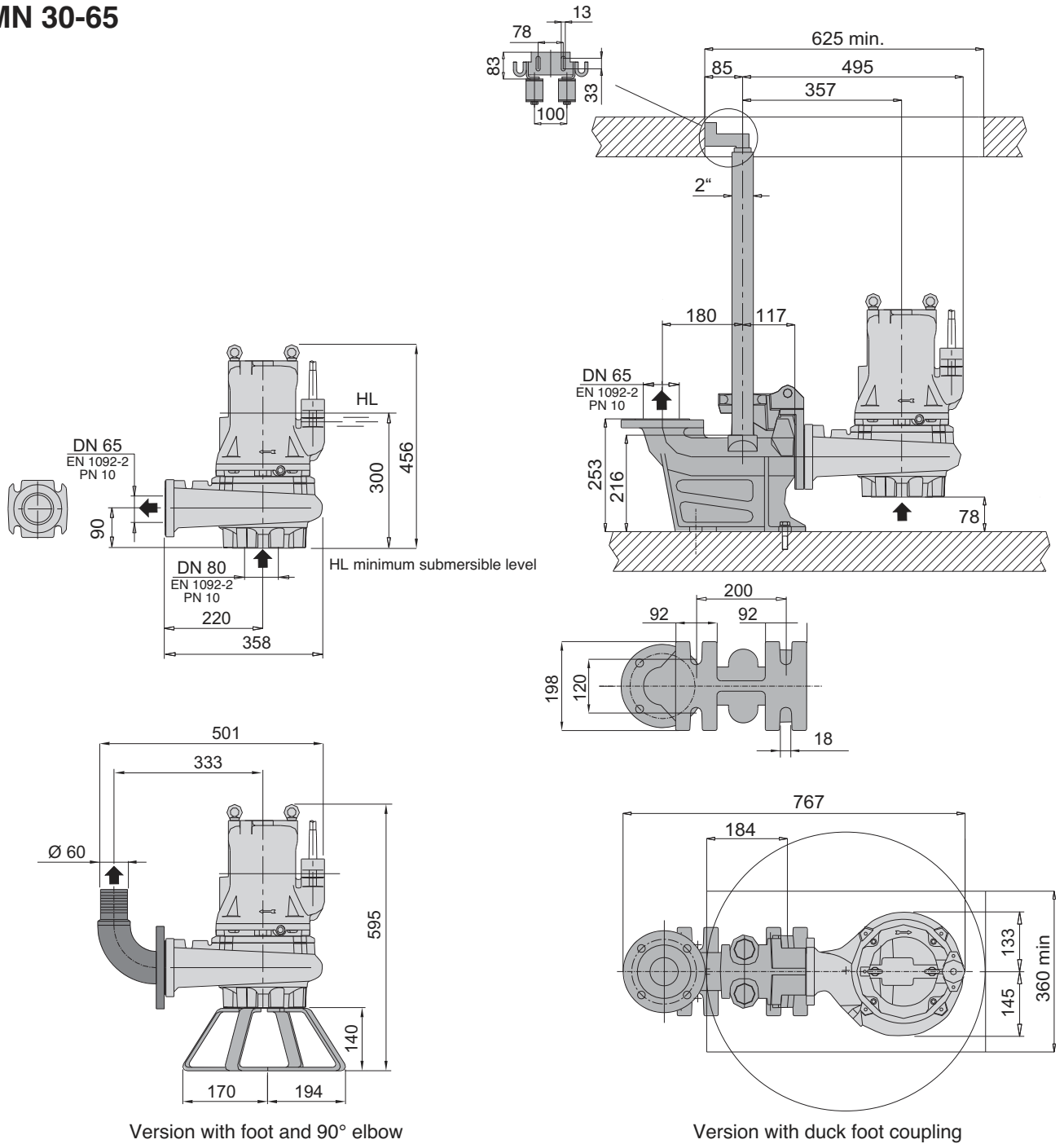


Version with duck foot coupling

TYPE	Weight kg
I-GMV4 50-65C	47
I-GMV4 50-65B	
I-GMV4 50-65A	
I-GMC 40-65B	50
I-GMC 40-65A	

Dimensions and weights

I-GMN 30-65



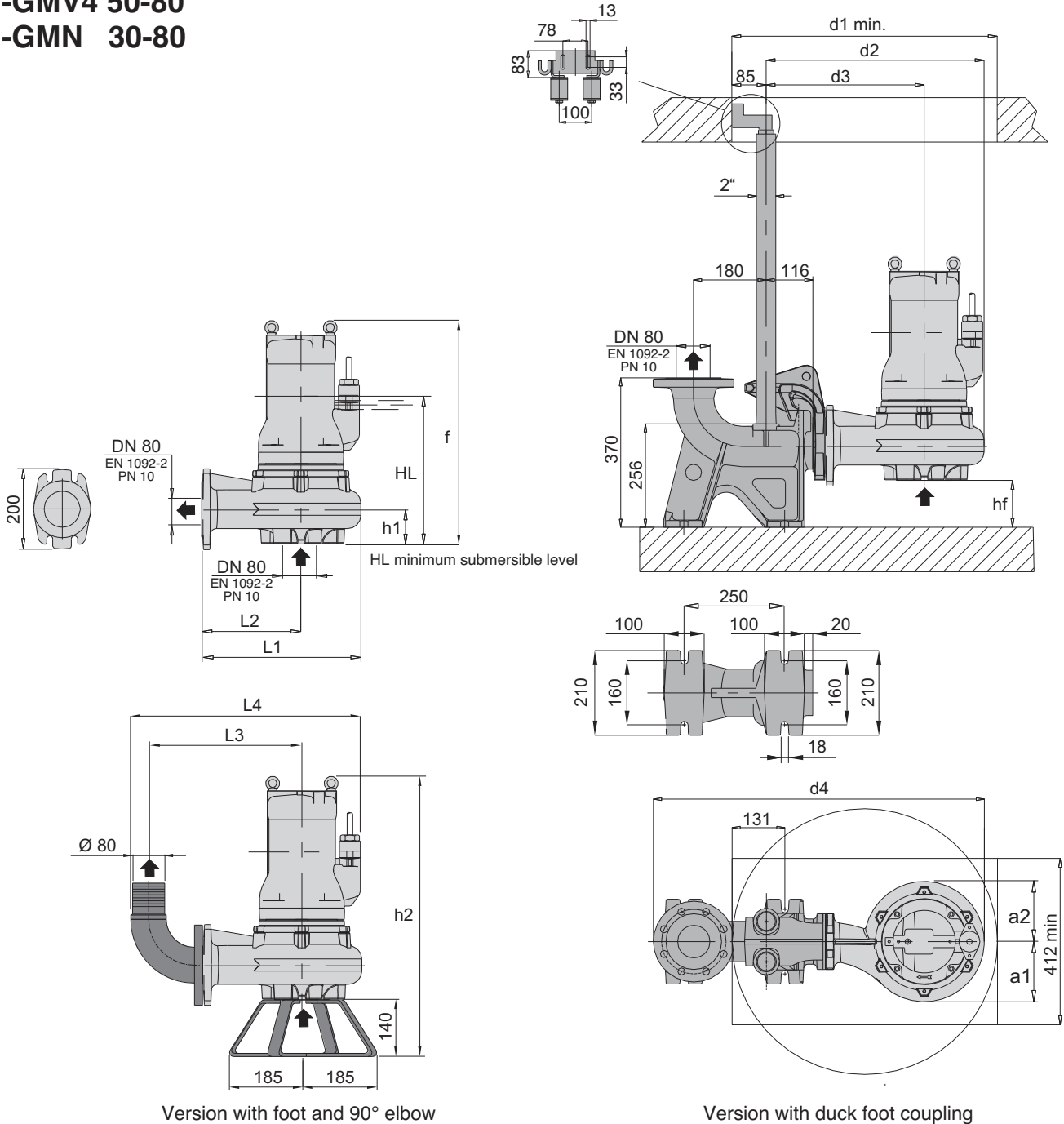
Version with foot and 90° elbow

Version with duck foot coupling

TYPE	Weight kg
I-GMN 30-65B	53
I-GMN 30-65A	

Dimensions and weights

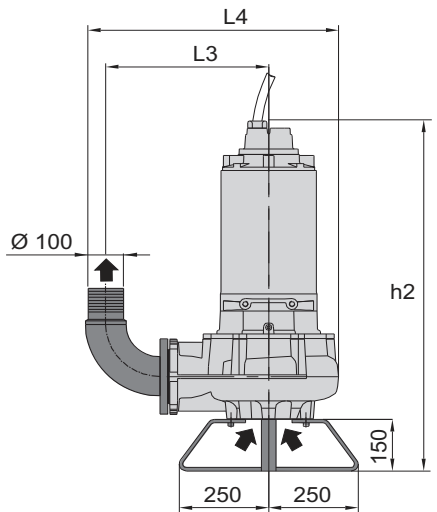
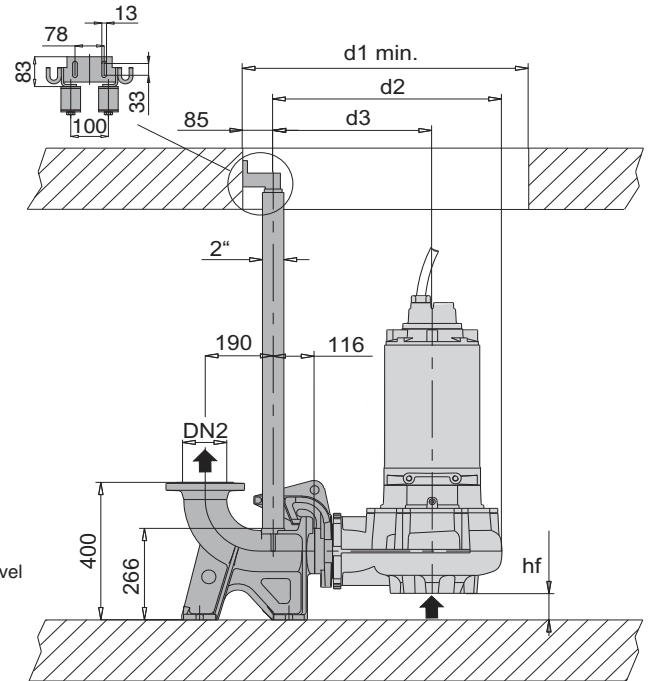
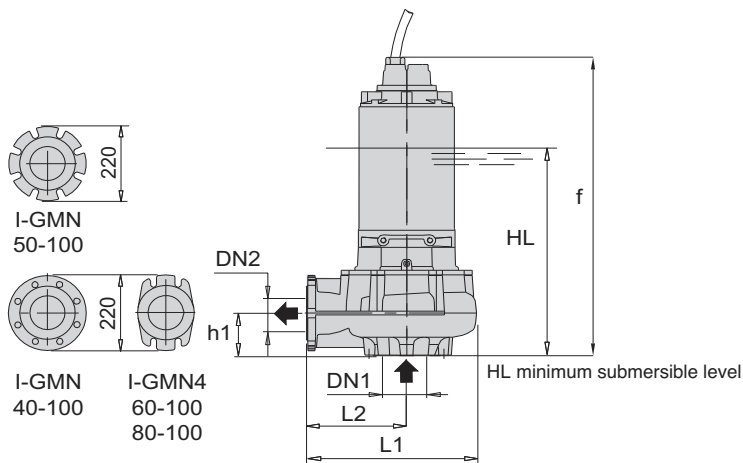
I-GMV4 50-80
I-GMN 30-80



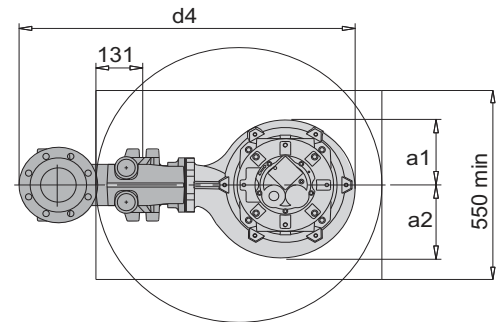
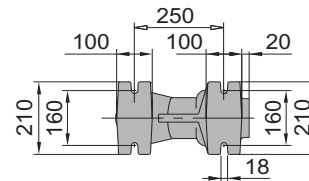
TYPE	EN 1092-2 PN 10		Dimensions mm														Weight kg	
	DN1	DN2	f	HL	hf	h1	h2	a1	a2	d1	d2	d3	d4	L1	L2	L3		L4
I-GMV4 50-80B	80	80	519	363	84	116	659	136	157	658	511	366	791	365	220	355	544	66
I-GMN 30-80B	80	80	515	330	110	90	655	133	145	700	511	366	791	365	220	355	544	78
I-GMN 30-80S	80	80	767	438	132	68	917	165	165	700	571	386	851	405	220	362	590	150

Dimensions and weights

- I-GMN 40-100
- I-GMN 50-100
- I-GMN4 60-100
- I-GMN4 80-100



Version with foot and 90° elbow

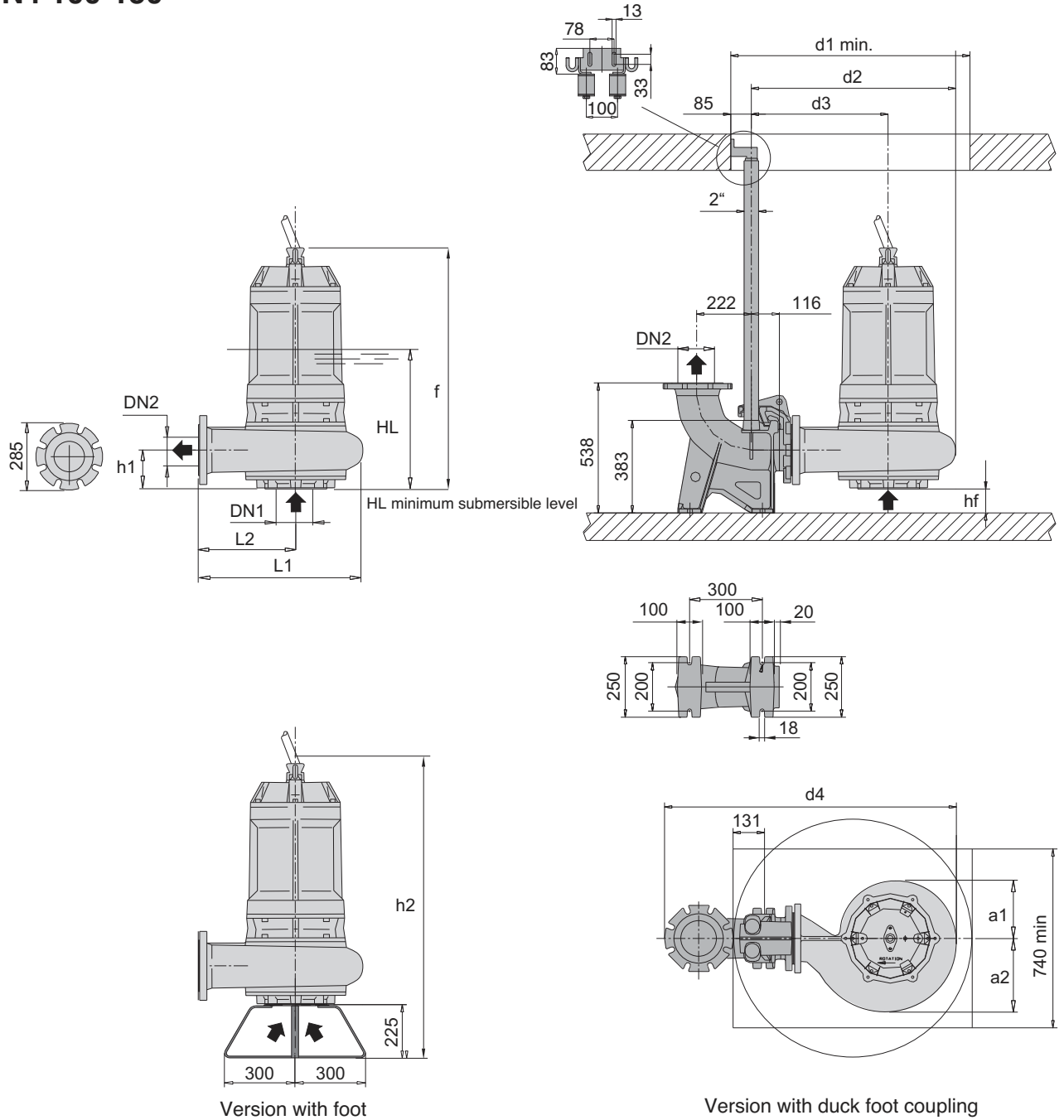


Version with duck foot coupling

TYPE	EN 1092-2 PN 10		Dimensions mm														Weight kg	
	DN1	DN2	f	HL	hf	h1	h2	a1	a2	d1	d2	d3	d4	L1	L2	L3		L4
I-GMN 40-100D	125	100	814	478	127	73	964	168	184	750	628	441	928	467	280	449	694	210
I-GMN 40-100C																		
I-GMN 40-100B																		
I-GMN 40-100S	125	100	1269	570	127	73	1419	193	193	800	628	441	928	462	280	365	602	230
I-GMN 50-100C	125	100	1033	628	62	139	1183	180	231	850	673	466	973	507	300	474	738	364
I-GMN 50-100B																		
I-GMN 50-100A																		
I-GMN4 60-100B	125	100	826	526	54	147	976	189	212	800	640	445	940	474	279	456	706	167
I-GMN4 60-100A																		
I-GMN4 80-100B	125	100	890	570	53	147	1040	189	212	800	640	445	940	474	279	453	706	220
I-GMN4 80-100A																		

Dimensions and weights

I-GMN4 100-150



TYPE	EN 1092-2 PN 10		Dimensions mm																Weight kg
	DN1	DN2	f	HL	hf	h1	h2	a1	a2	d1	d2	d3	d4	L1	L2	L3	L4		
GMN4 100-150B	150	150	991	576	100	160	1180	235	305	990	931	566	1208	680	400	-	-	366	
GMN4 100-150A																			